

# Technology Snapshot

## PromarkerD – a predictive and diagnostic test for diabetic kidney disease

PromarkerD is Proteomics International’s revolutionary test that can diagnose and predict whether a patient will develop diabetic kidney disease before clinical symptoms are evident. There is currently no available test for predicting the onset of diabetic kidney disease.

The PromarkerD test has the potential to benefit:

- *Diabetics*
- *Undiagnosed diabetics*
- *People with pre-diabetes*
- *People at risk of any form of kidney disease*

### How the PromarkerD test works:



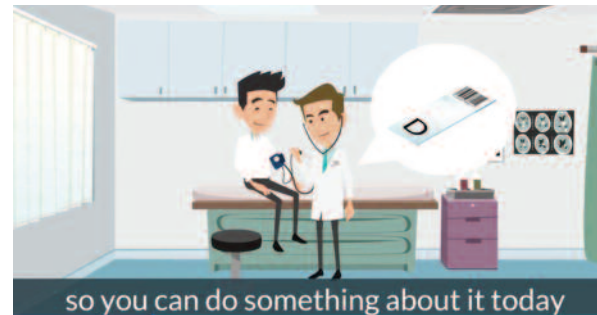
The patient’s blood is taken for testing in a pathology collection centre in a routine blood test.



The testing laboratory sends the results of the blood analysis to the PromarkerD hub for processing.



The patient’s blood is analysed in the testing laboratory using the PromarkerD assay.



The PromarkerD hub analyses the blood results and determines the patient’s risk of developing diabetic kidney disease in the next four years.

Once detected, diabetic kidney disease can be treated through medication and lifestyle changes to slow down the disease progression, and to prevent or delay the onset of kidney failure.

### The science behind Promarker D

To develop PromarkerD, Proteomics International used its Promarker platform to identify a panel of biological fingerprints of diabetic kidney disease that can both diagnose and predict the disease. The Promarker platform is a proprietary technology developed by Proteomics International. Promarker is able to identify biological markers (biomarkers) of complex diseases and conditions. Promarker works by identifying the ‘protein fingerprint’ unique to a disease that can be used to indicate or predict the risk of developing that disease.

Images extracted from “The PromarkerD Test and How it Works”. Visit [www.PromarkerD.com](http://www.PromarkerD.com) to view the full video